

## Turning the Ares on/off

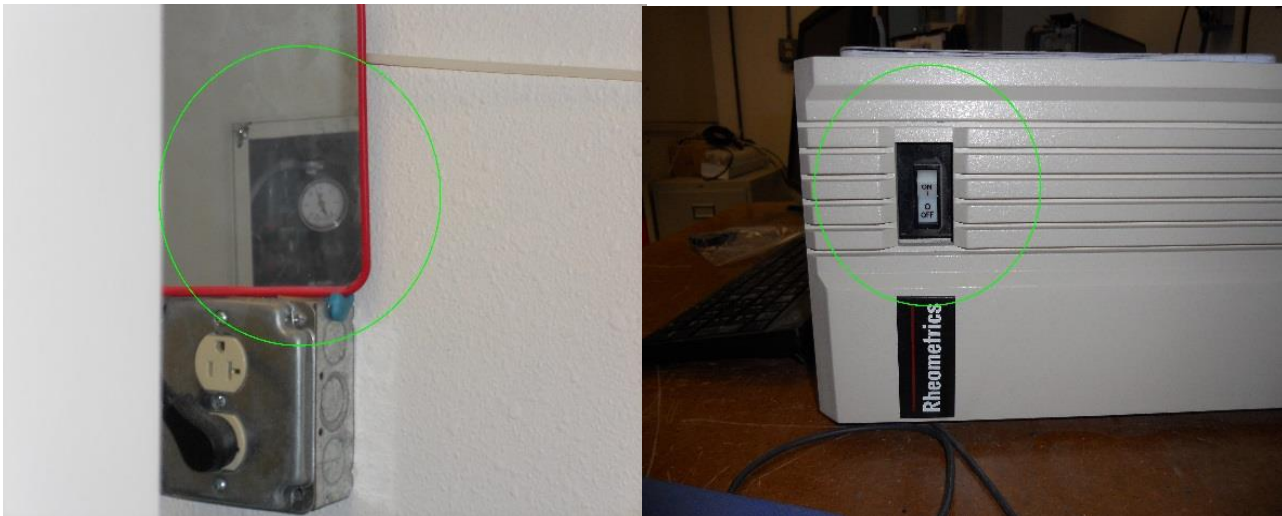
*This procedure should be performed at the beginning of every session of operating the Ares.*

1. Turn on the gas then the air in room 130B.



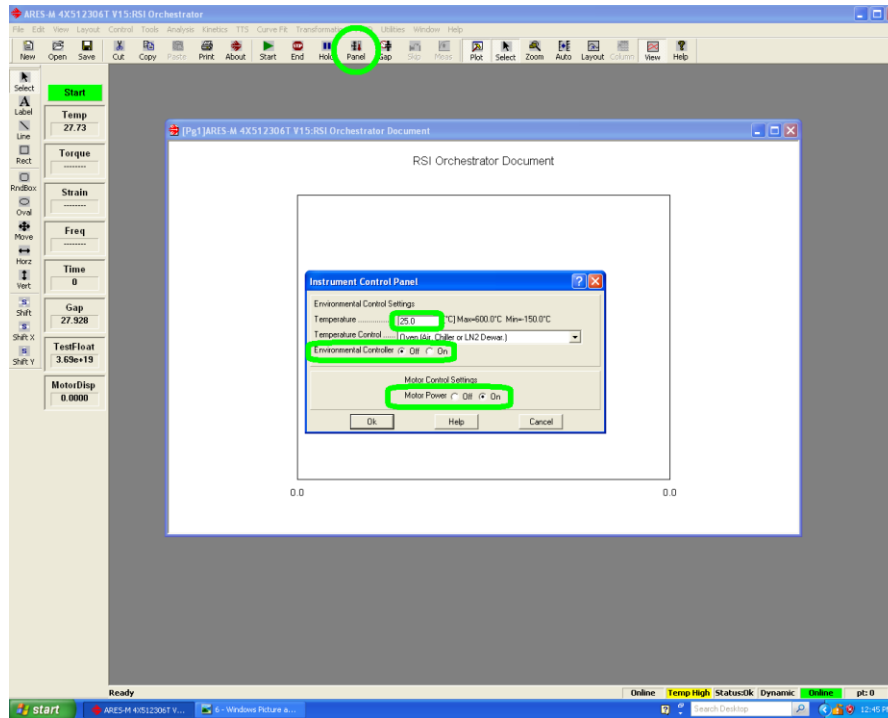
The gas is pictured on the left, turn the perpendicular red handle to the open position such that it is parallel with the pipe. On the right is the Blue Hankison unit, flip the rightmost switch to the on position. Order is crucial in this step to prevent damage to the instrument.

2. Ensure the pressure gauge behind the Ares reads 35-40 psi, then turn the Ares on.



The switch tends to stick in the half on position, to ensure the software and the system sync correctly, the switch must be turned on in one swift motion.

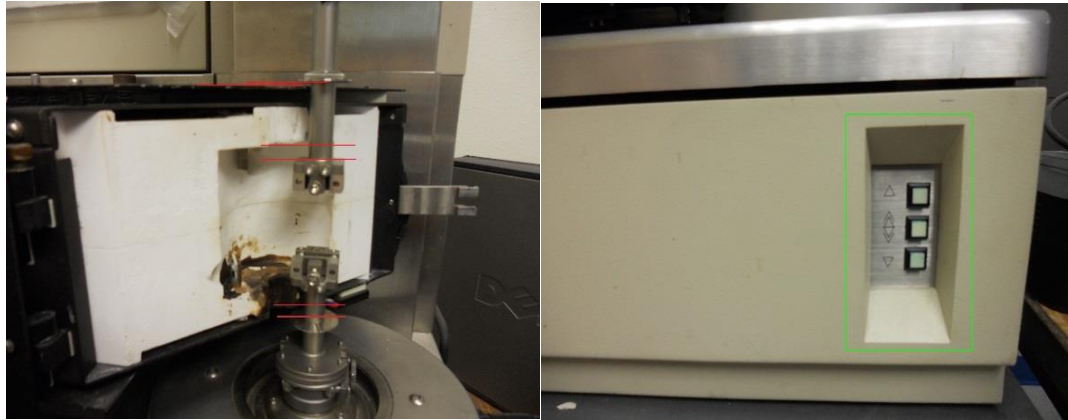
3. Open the RSI Orchestrator Program on the Desktop then turn the motor and environmental chamber on.



Clicking "Panel" will bring up the Instrument Control Panel which can then be used to toggle the motor and environmental chamber on/off as well as set the temperature of the environmental chamber. It is imperative that the fixtures be free of samples/obstructions when the motor is turned on to avoid damage to the instrument.

4. To turn off the instrument, flip the off switch. Return to 130B and turn off the air then gas. (reverse order in which they were turned on)

5. To move the environmental chamber, apply a small amount of upward force to it while gently rocking it then slide it the desired direction. **Be sure nothing obstructs the path of the chamber, in particularly the fixtures.** The upper fixture height can be adjusted using the bottom button panel. The chamber must be locked all the way to the left in order for the motor controls to work.



The red lines on the leftmost photo show potential impact points. Do not crash the environmental chamber into the fixtures as it will destroy the machine. Use the buttons indicated on the right to adjust the fixture to the correct height. These buttons move the upper fixture the direction indicated. Pressing the middle button in conjunction with one of the other buttons accelerates the movement of the fixture greatly.

